



# PRODUCT PROFILE

## FactoryTalk<sup>®</sup> Historian Classic

### OVERVIEW

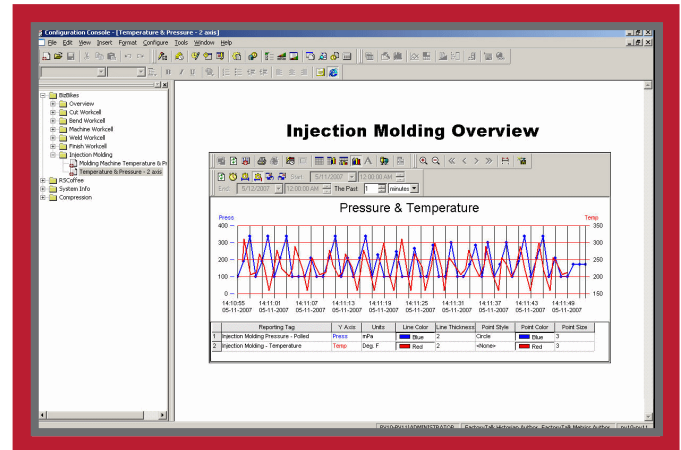
FactoryTalk Historian Classic helps manufacturers — of all types and sizes — to increase quality, reduce waste, and better control manufacturing processes. With FactoryTalk Historian Classic, you can harness the vast volume of data produced in the control systems that run your plant. FactoryTalk Historian Classic provides a reliable and easy-to-configure data collection and analysis solution that ensures the right people can see the information they need to make critical business decisions.

FactoryTalk Historian Classic can connect to any control system or human-machine interface (HMI) software and collect data at high speed, in real time, and at full resolution. Built-in Web reporting capabilities and analysis tools expose this data to operators, supervisors, quality managers, and personnel outside the plant.

### FEATURES

FactoryTalk Historian Classic helps you turn your production data into actionable information that allows for reliable and configurable data collection and analysis. FactoryTalk Historian Classic offers:

- Complete system for time-series data collection
- Easy, flexible, scalable configuration
- Compatibility with any PLC or HMI using OPC standards
- Reliable, 24/7 data collection
- Data storage in an efficient, usable form
- Built-in HTML report writer
- Access to all reports with a Web browser
- Customizable and extendable architecture
- Dynamic modification of data collection parameters
- Excel Add-in that allows you to retrieve data directly from Microsoft<sup>®</sup> Excel
- Lossless data compression for more efficient data storage
- Sophisticated data collection and triggering options
- Standard and custom data calculators
- Support for Coordinated Universal Time
- Reports on data from external sources
- Support for Microsoft<sup>®</sup> SQL Server and Oracle<sup>®</sup> databases

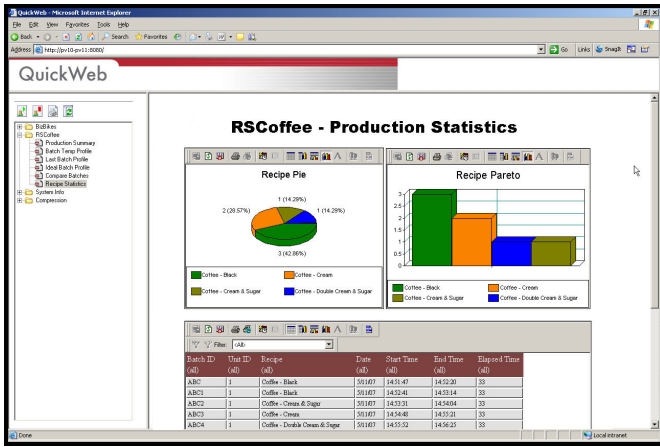


### BENEFITS

- Increase quality by identifying process variability and its causes
- Improve processes through the ability to analyze complex process data easily
- Reduce variability by verifying production parameters versus targets or norms
- Respond to requests from customers or regulators more easily through the maintenance of an accessible online record
- Decrease overhead costs by saving time in collecting data and preparing reports

### DATA COLLECTION

FactoryTalk Historian Classic can collect data from any OPC-compliant plant floor control device or HMI from any manufacturer. All the data is collected in real-time with FactoryTalk<sup>®</sup> Transaction Manager as the “behind-the-scenes” engine for the data collection. The FactoryTalk Historian Classic data is stored in an open SQL Server or Oracle database with a documented schema. Applications that have a sophisticated data collection requirement may require the purchase of a full FactoryTalk Transaction Manager license.



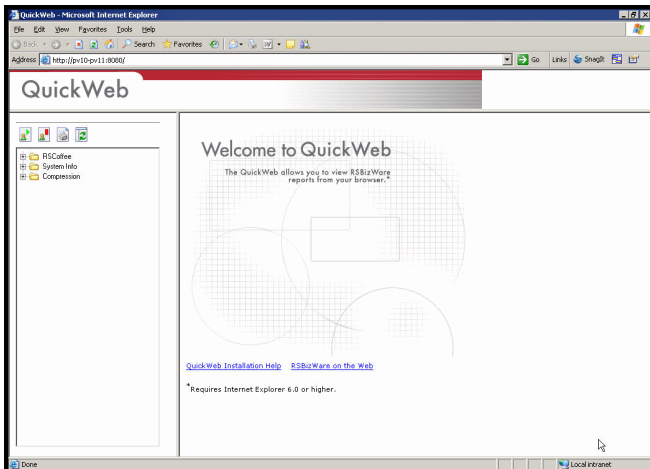
Once the data collection has begun, FactoryTalk Historian Classic will continue to collect data until the process is manually stopped, and changes can be made without interrupting data collection — even after data collection has begun. This flexibility is enabled by the FactoryTalk® Directory and FactoryTalk® Live Data services from the FactoryTalk Services Platform.

### CREATING REPORTS

The Configuration Console, used to configure FactoryTalk Historian Classic data collection, is also an HTML editor and is used to create Web-based reports for FactoryTalk Historian Classic and other data. Other HTML editors like Microsoft® FrontPage® can be used to create or modify these reports. The reports are HTML pages with embedded ActiveX® controls called Report Objects. There are three specific report object types for displaying FactoryTalk Historian Classic data:

- Time-series object — displays time-series data (analog data over time) in a graphical form
- Text report object — displays text data in a grid form
- Chart object — displays data in chart form: bar charts, pie charts, x-y plot, etc.

A FactoryTalk Historian Classic Authoring Client license is required to create reports.



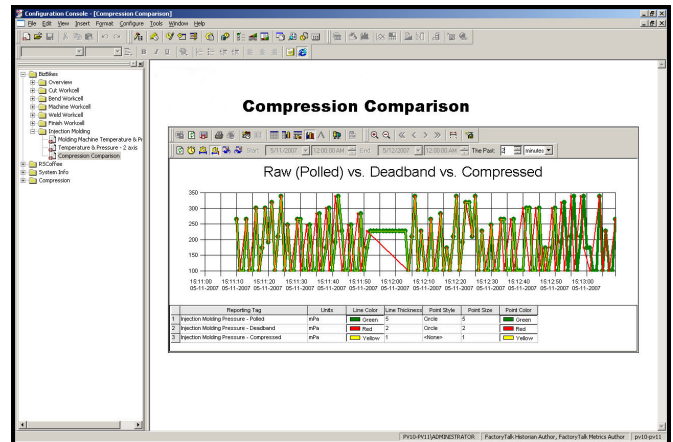
These HTML pages can also contain typical Web page content like hyperlinks and graphics. In addition to reporting on FactoryTalk Historian Classic data, the objects can be used to report on data from another data source or database.

### VIEWING REPORTS

All FactoryTalk Historian Classic reports are available to licensed runtime users via a standard Web browser. Report Objects can also be embedded into any ActiveX container, such as an HMI screen, so operators can have the latest data at their terminals. This is accomplished without having to manage a commercial Web server product like Microsoft IIS, because the Information Services Manager is a Web server application.

Users can also use the built-in features of most Report Objects to drill into the data they want to see or to modify report contents at run time. These features include:

- Add and remove reporting tags (time-series object)
- Zoom in and out (time-series object)
- Time toolbars
- Column filters (text object)
- Filter pickers
- Prompt at runtime filters



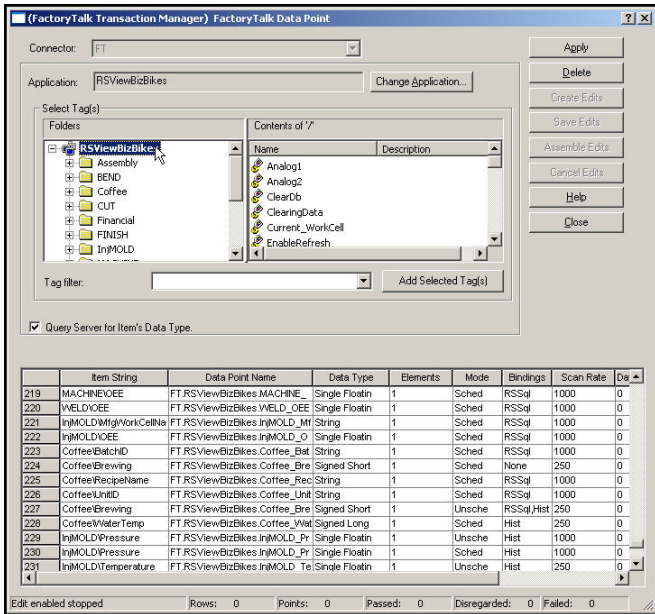
FactoryTalk Historian Classic creates a default zero-administration Web page called QuickWeb that contains all defined reports. Report Web pages can also be embedded into corporate intranet Web pages or in portal products like FactoryTalk Portal. Additionally, reports can be printed, saved to files, or emailed on an ad-hoc or scheduled basis.

Finally, the open nature of the FactoryTalk Historian Classic data model permits the use of other reporting tools, including:

- Microsoft Excel (using the Excel Add-In)
- Microsoft Office components
- Microsoft Reporting Services

## SECURITY

FactoryTalk Historian Classic includes a complete security system. Security is based on FactoryTalk® Security with application-specific extensions. Users and groups can be created or imported from the operating system. A verified login is required to access all functions, including viewing reports, and users are restricted to viewing only those reports for which they have been granted rights. Furthermore, special functional privileges can be granted to users or groups. Only users with Authoring Client licenses are allowed to configure FactoryTalk Historian Classic or create reports.



In addition, each object in the reporting environment can be secured:

- Reports
- Report Objects
- Filters
- Report Data Sources

## FACTORYTALK SERVICES PLATFORM

The FactoryTalk® Services Platform is the foundation of the FactoryTalk Integrated Production and Performance Suite. It is a flexible solution consisting of activation procedures, a common address book, centralized authentication and access control, and uniform diagnostics that can help reduce costs and extend the life cycle of your existing investments.

## GET ANSWERS FAST

When you purchase FactoryTalk Historian Classic, you receive both industry-leading software and award-winning global support. Use the MySupport feature to personalize our Support Services Web site for your needs. MySupport can send you regular email messages with links to the latest technical notes and software updates for FactoryTalk Historian Classic and other products. To register, visit <http://support.rockwellautomation.com>.

## GET MORE INFORMATION

For ordering information, contact your local Rockwell Automation sales office or Allen-Bradley distributor. Or learn more by visiting <http://www.rockwellsoftware.com>.

## FactoryTalk Services Platform

The FactoryTalk® Services Platform delivers value. It is a shared set of common features that enables superior interoperability and commonality between applications for reduced engineering, operations and training costs, while extending the life of existing investments. The FactoryTalk Services Platform provides a solid foundation for today and a path for the future.

	Activation	Directory	Security	Diagnostics	Audit	Live Data	Alarms & Events
FactoryTalk Historian Classic	✓	✓	✓	✓	✓	✓	

Allen-Bradley, FactoryTalk and Rockwell Automation are registered trademarks of Rockwell Automation, Inc.  
All other trademarks are the property of their respective owners.

[www.rockwellautomation.com](http://www.rockwellautomation.com)

### Power, Control and Information Solutions Headquarters

Americas: Rockwell Automation, 1201 South Second Street, Milwaukee, WI 53204-2496 USA, Tel: (1) 414.382.2000, Fax: (1) 414.382.4444

Europe/Middle East/Africa: Rockwell Automation, Vorstlaan/Boulevard du Souverain 36, 1170 Brussels, Belgium, Tel: (32) 2 663 0600, Fax: (32) 2 663 0640

Asia Pacific: Rockwell Automation, Level 14, Core F, Cyberport 3, 100 Cyberport Road, Hong Kong, Tel: (852) 2887 4788, Fax: (852) 2508 1846