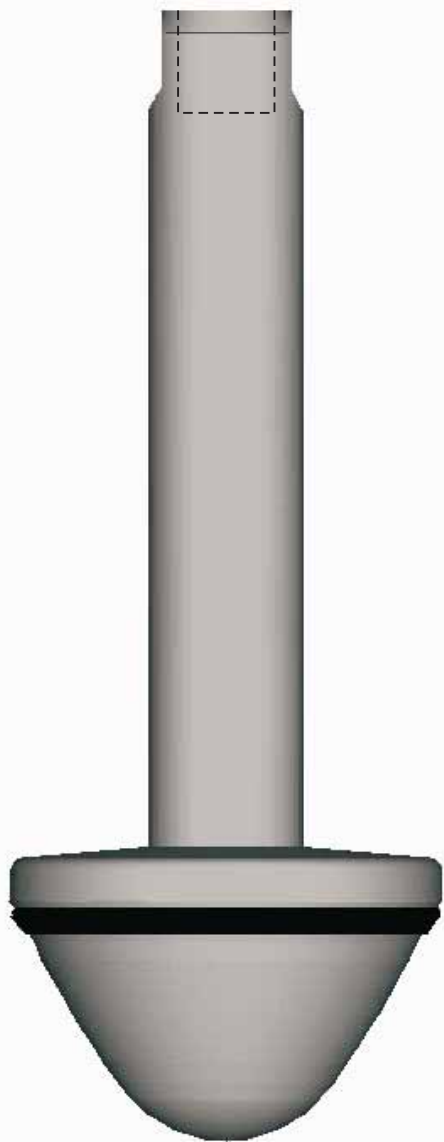


Waukesha Cherry-Burrell



Taperflo Stem with Tri-Ring seat

Taperflo Throttling Valves *1 1/2-Inch through 4-Inch*

Field Convertible

The stem is the only piece to change to convert a W61 shut-off valve to a Taperflo Valve. The Moore Positioner is a bolt-on module but not necessary with the new I to P transducers.

Water Tight Shutoff

Water tight shutoff has been desired for a long time but until now not available. With the Tri-Ring stem, the Taperflo throttling valve is both a throttling valve and a shutoff valve.

Seven Different Actuators

The standard actuators for the WCB valves fit the Taperflo valve. Available are 4-inch, 5-inch, 6-inch light spring, 6-inch standard spring, 6-inch air-to-air, 3 position 4-inch, and hand lock actuators. The 4-inch and 5-inch can be fitted with the Moore positioner in air-to-raise or air-to-lower configuration.

Waukesha Cherry-Burrell
611 Sugar Creek Road
Delavan, WI 53115
Tel: 1.800.252.5200 or 414.728.1900
Fax: 1.800.252.5012 or 414.728.4904
E-mail: custserv@waukesha-cb.com
Web site: <http://www.waukesha-cb.com>



**Waukesha
Cherry-Burrell**

FH-1867
Effective 1/99